



GAT MONTHLY MEMBERSHIP PROGRESS REPORT

Results as of: 8/31/2022

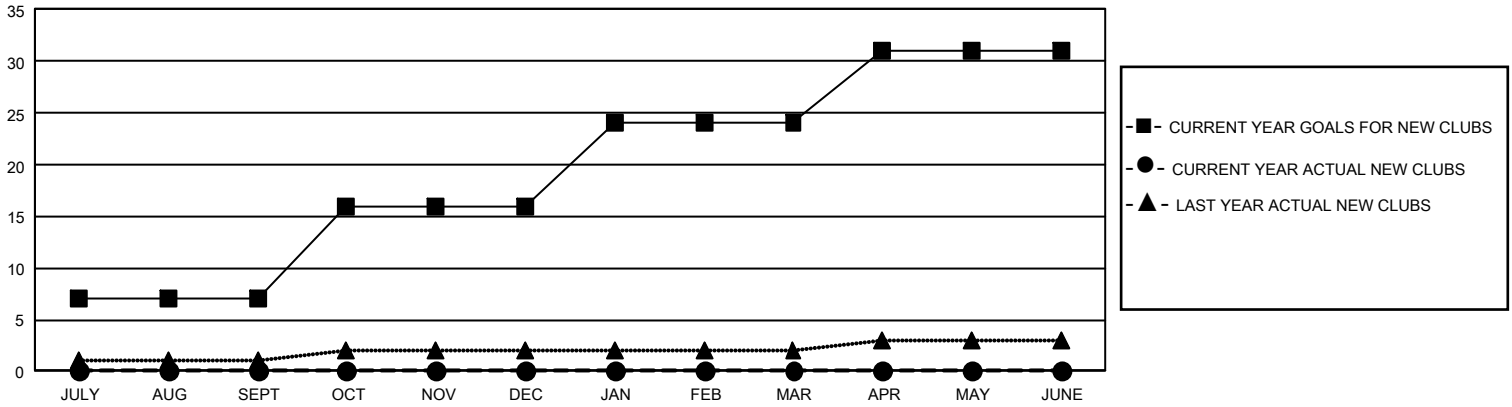
GMT Constitutional Area 1, Group J

REPORT DOES NOT INCLUDE CLUBS IN UNDISTRICTED AREAS.

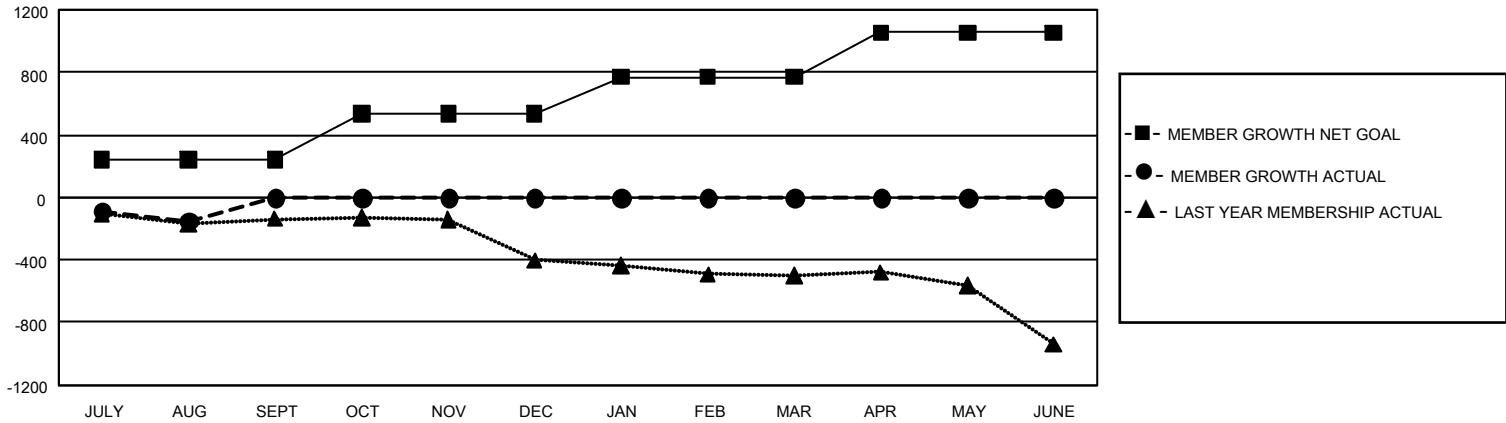
Clubs			
RESULTS FOR 2022-2023			
QUARTER	NEW CLUB GOAL	NEW CLUBS	DROPPED CLUBS
JULY/AUG/SEPT	21	0	5
OCT/NOV/DEC	27	0	0
JAN/FEB/MAR	24	0	0
APR/MAY/JUNE	21	0	0

Members			
RESULTS FOR 2022-2023			
QUARTER	MEMBER GROWTH NET GOAL	MEMBER GROWTH ACTUAL	DROPPED MEMBERS ACTUAL (including transfers)
JULY/AUG/SEPT	241	267	390
OCT/NOV/DEC	297	0	0
JAN/FEB/MAR	231	0	0
APR/MAY/JUNE	287	0	0

GOALS AND ACTUAL NEW CLUBS CUMULATIVE



GOALS AND ACTUAL MEMBERS CUMULATIVE



DROPPED CLUBS: 5	135 CLUBS OF 894 ADDED 1 OR MORE NEW MEMBERS	GENDER DISTRIBUTION	
		MALE 14,313 (70.02%) FEMALE 6,125 (29.97%) NON BINARY 1 (0.00%) PREFER NOT TO ANSWER 1 (0.00%)	
DROPPED MEMBERS		CLICK HERE FOR CUMULATIVE MEMBERSHIP DATA	TOTAL FAMILY UNIT MEMBERS 3,981
DECEASED 62 CLUB CANCELLED 9 OTHER 319 TOTAL 390			FAMILY MEMBERS PAYING HALF DUES 2,029